



## **Laura Ranker**

Drinking Water & Groundwater Protection Division

Source Water Protection Specialist

(802) 585-9478 Direct Line

(802) 828-1535 Office Line

[laura.ranker@vermont.gov](mailto:laura.ranker@vermont.gov)



## **Diana Butler**

Source Water Protection Specialist

(802) 660-4988 ext 353

(802) 922-0968

[dbutler@vtruralwater.org](mailto:dbutler@vtruralwater.org)

# Overview

## Source Protection Area

Delineation & Role:

GW Zones

SW Zones

Fixed Radius

## Source Protection Plan Components

Source Protection Area Maps

Topographic

Tax/Property Maps

ANR Atlas mapping tool

Identifiers

Source Protection Area Delineation

Inventory of Potential Sources of  
Contamination

Assessment of Potential Sources of  
Contamination

Management Plan of Risk

Contingency Plan

## Update Specifics

Who Should Update the Plan and When?

Components of Every Update

## Implementation

Acquisition/Control

Communication

Educational Opportunities

Land Use Regulations

Partnerships

Forestry

Agriculture

Infrastructure Improvements

# Overview

## Tools

### ANR Atlas

GW/SW SPAs

Hazardous Sites

Stormwater Permits

Sewer Service Area

Measuring & Labeling

Contours and Land Features

Create a Map - Printing/Save



### Parcel Viewer

Well Completion Reports

UST & Hazardous Sites databases

Septic Tank Search & DEC Permit database

## Tool Links

<https://anrmaps.vermont.gov/websites/anra5/>

<https://maps.vcgi.vermont.gov/parcelviewer/>

<https://anrweb.vt.gov/DEC/WellDrillerReports/Default.aspx>

<https://anrweb.vt.gov/DEC/ERT/UST.aspx>

<https://anrweb.vt.gov/DEC/WWDocs/Default.aspx>

## Helpful Links

<https://dec.vermont.gov/water/drinking-water/public-drinking-water-systems/source-water-protection>

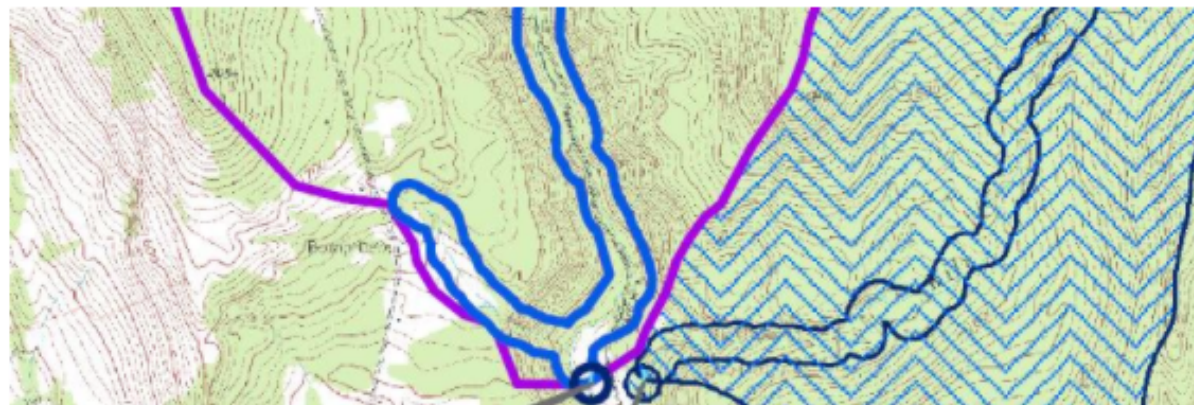
<https://vtruralwater.org/drinking-water/source-water-protection/>

<https://dec.vermont.gov/waste-management/spills#SpillReporting>



[Home](#)[About DEC](#)[Commissioner's Office](#)[Administration and Innovation](#)[Air Quality and Climate](#)[Drinking Water and Groundwater](#)[COVID-19 Response and Resources](#)[PFAS \(Per- and polyfluoroalkyl substances\)  
Information Page](#)[Public Drinking Water](#)[Public Drinking Water Systems](#)[Public Community and Non-Transient Non-  
Community Water Systems](#)[Transient Non-Community Water Systems](#)[Domestic Bottled and Bulk Water \(VT Sources\)](#)[Imported Bottled Water \(Non-VT Water Sources\)](#)[Source Water Protection](#)[Rules and Regulations](#)[Forms and Applications](#)

## SOURCE WATER PROTECTION



Since 1992, a Public Community and Non-Transient, Non-Community Water System must have an approved Source Protection Plan (SPP). This Plan addresses the actions the public water system will perform to minimize the contaminant risks to their drinking water supply source(s). This is also necessary in order to receive an [Operating Permit](#), [Phase II/V Monitoring Waiver](#), and/or [Phase II/V Monitoring Waiver Renewal](#). The water system is required to submit an updated plan to the Division every three years for approval.

### Source Protection Area (SPA)

Area of land that likely recharges or passes groundwater through it to the public water source, and the basis of the activities that the water system will perform to minimize contamination and are identified in the SPP.

### Fact Sheets

- [Groundwater SPA for PCWSs](#)
- [Groundwater SPA for NTNCs](#)

Public drinking water systems are required to develop and implement Source Protection Plans (SPPs) to protect their drinking water sources.

Our Source Water Specialist can help your system write or update a Source Protection Plan. Find contact info [here](#). Due to limited staff time, priority will be given to Member Systems.

You can use the resources below to write or update your system's Source Protection Plan.

## Downloads

[Checklist: Required Information for a Source Protection](#)

[Guidance: Required Information for a Source Protection Plan](#)

[Checklist: Preparing a Source Protection Plan Update](#)

[Powerpoint: Updating Your Source Protection Plan](#)

[Fact Sheet: Groundwater Source Protection Areas \(Community Water Systems\)](#)

[Fact Sheet: Groundwater Source Protection Areas \(NTNC Systems\)](#)

[Fact Sheet: Surface Water Source Protection Areas](#)

[Fact Sheet: Source Protection Active Implementation](#)

[Help Guide: Potential Sources of Contamination](#)

[Required Agricultural Practices](#)



[Click to download the Septic Smart brochure.](#)

## Links

[Natural Resources Atlas – online mapping tool](#)

[Vermont Center for Geographic Information – parcel viewer](#)

# OTHER RESOURCES



Water Systems Source Permit and Source Evaluation Report



Water Systems Permit to Operate



Water Systems O&M Manual



Last complete SPP



VT Water Supply Rule, revision effective date March 17, 2020



Local town officials, Town Clerk, Zoning Administrator, EMD



VT DWGPD staff & Website



VRWA, Private Consultants, Regional Planning Commissions



<https://dec.vermont.gov/water/drinking-water/public-drinking-water-systems/source-water-protection>



# Source Protection Plan A WORKING DOCUMENT

Protecting Drinking Water Quality and Public Health

# Source Protection Area

A surface and subsurface area from or through which contaminants are reasonably likely to reach a public water system source

## Surface Water

A Surface Water SPA is the watershed area contributing surface water and groundwater flow to the drinking water intake.

## Groundwater

A Groundwater SPA is the land area beneath which groundwater flows to a well, spring, or infiltration gallery. A contaminant released to the land surface or subsurface in a Groundwater SPA would be reasonably likely to move toward, and reach, the drinking water source.

Wellhead Protection Area



Source Protection Area



# Surface Water SPA ZONES

**Zone 1** is an area immediately around the drinking water withdrawal site. This is the area where impacts from contamination are likely to be immediate and certain. For public community water systems, this area is generally 200 feet around the intake.

**Zone 2** consists of areas within the watershed located within 200 feet of perennial surface water. Zone 2 is limited to a maximum extent of 17,000 acres. Land uses occurring within this zone are considered to have a greater potential to impact the source than the majority of the watershed.

**Zone 3** consists of the remaining watershed area outside Zones 1 and 2 where land uses have potential to impact drinking water quantity and quality.



# Groundwater SPA ZONES

**Zone 1** is the area immediately around the water source. This is the area where impacts from contamination are likely to be immediate and certain. For public community water systems, this area is generally 200' around the well, spring, or infiltration gallery.

**Zone 2** includes the area where groundwater flows to the source from outside Zone 1 and where there would be probable impacts to the water supply if contamination were to occur. This is the primary recharge area.

**Zone 3** consists of the remaining area that recharges Zone 2 and where impacts from potential sources of contamination are possible. This is usually, but not always, the area upslope from Zone 2 to the watershed boundary. This is the secondary recharge area.

The **Two Year Travel Time Zone** is identified as an area where bacteria and virus threats (such as those from onsite disposal of sewage) would reach the drinking water source in less than two years by traveling through the soils. Two years is the time it takes most viruses to die off or become non-infectious in a groundwater environment.

# **Isolation Zone – 200 ft radius**

## **Public Community Ground and Surface Water Sources**

### **Permitted Land Uses**

- **source operation and maintenance;**
- **playgrounds, ball fields, tennis courts;**
- **seasonal light duty roads;**
- **conservation zones;**
- **controlled use of potassium and phosphorous fertilizers; and**
- **other uses which have the approval of the Secretary.**

### **Prohibited Land Uses**

- **application of nitrogen, pesticides and herbicides;**
- **buildings other than those required for the water system;**
- **parking of motor vehicles;**
- **chemical or fuel storage except natural gas or propane and other chemicals that are required by the water system;**
- **swimming pools;**
- **salted or paved roads passing through the area;**
- **septic tanks, subsurface disposal systems and sewer lines; and**
- **any other activity which may contaminate the water source.**





# NTNC

Fixed Radius → No Zones

Protecting Public Water Sources in VT, A Guidance Document : Section 4.3.2 NTNC Source Delineation

MDD of Source (gpm)	Radius of Proposed SPA (feet)
0'-4.9	500
5 - 19.9	1000
20-49.9	2000
50- 99.9	2500
100 or greater	3000

# NTNC

## Required Horizontal Minimum Separation Distances

### VT WSR Appendix A, Part 11

### 11.4 Isolation and Separation Distances

## Table A11-1

POTENTIAL SOURCE OF CONTAMINATION AND OTHER SITING LIMITATIONS	SEPARATION DISTANCE
Roadway, Parking Lot (outer edge of shoulder)	25 Feet
Driveway (Fewer than 3 residences)	15 Feet
Sewage System Disposal Fields	(See a.)
Subsurface Wastewater Piping and Related Tanks	50 Feet
Property Line	10 Feet (See b.)
Limit of Herbicide Application on utility R O W	100 Feet (See c.)
Surface Water	10 Feet (See d.)
Flood ways	(See e.)
Buildings	10 Feet
Concentrated Livestock Holding Areas and Manure Storage Systems	200 Feet
Hazardous or Solid Waste Disposal Site	(See f.)
Non-sewage Wastewater Disposal Fields	(See f.)

## Table A11-2

	Water Source Maximum Daily Demand (GPM)			
Design Flow of Domestic Sewage System Disposal Field (GPD)	0-1.9	2.0-4.9	5.0-7.9	>8.0
Fewer than 2,000	100	150	200	200+ <sup>a</sup>
2,000 through 6,499	150	150	200	200+ <sup>a</sup>
Equal to or Greater than 6,500	200++ <sup>b</sup>	200++ <sup>b</sup>	200++ <sup>b</sup>	200+ <sup>a</sup>



# Source Protection Plan

## PLAN COMPONENTS



Alburgh Village Water System  
2020 Source Protection Plan Update  
VT0005136

Source Protection Plan Update  
Assistance from:



Diana Butler March 2020

- Source Protection Area Maps
- Source Protection Area Delineation
- Inventory of Potential Sources of Contamination
- Assessment of Potential Sources of Contamination
- Management Plan of Risk
- Contingency Plan



# Source Protection Area Maps

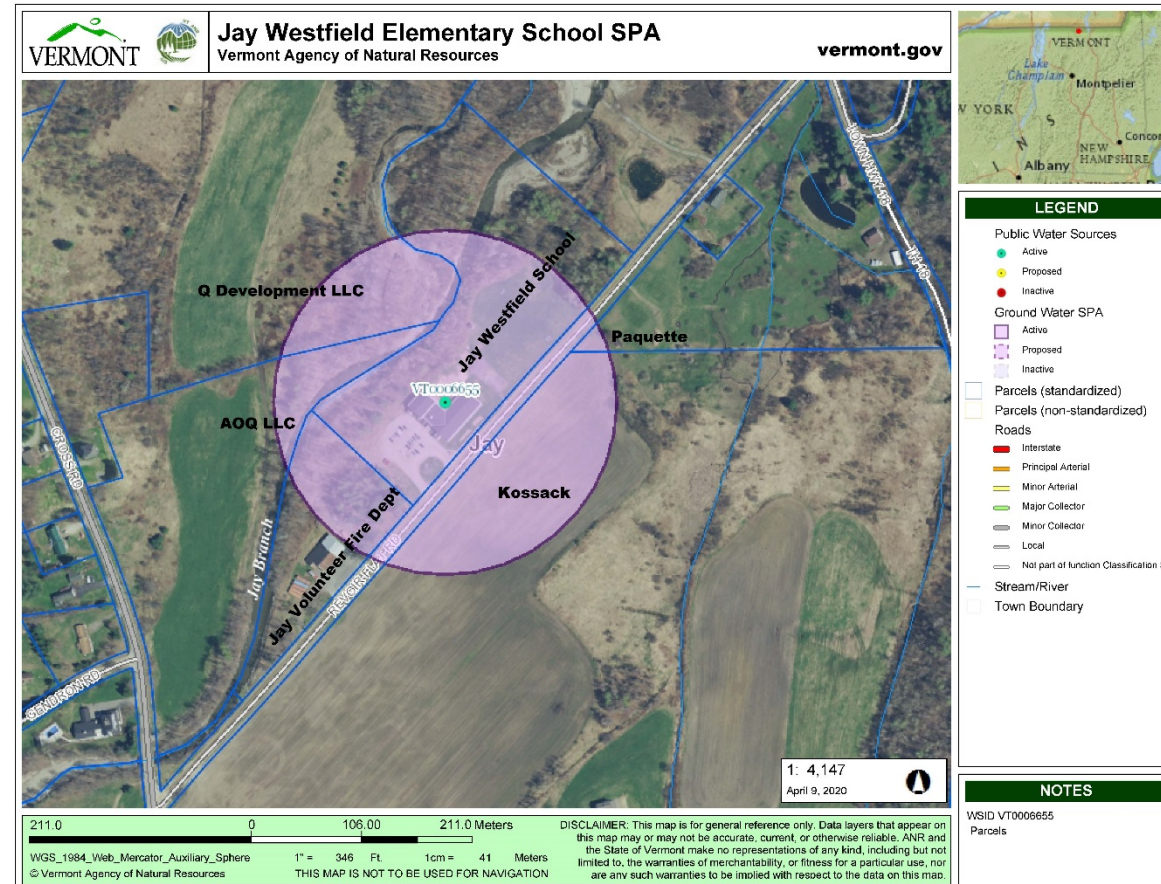
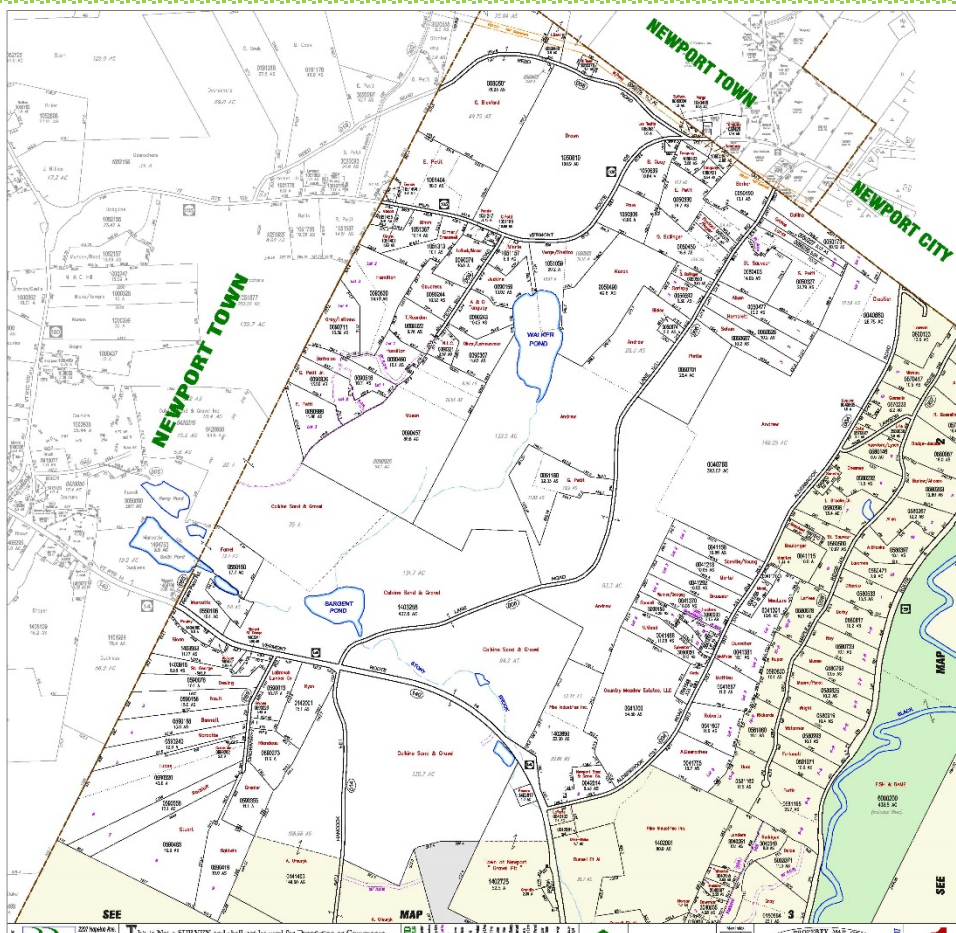
**The Source Protection Plan shall include a topographic map showing:**

- (a) the source(s) identified by name and the Drinking Water and Groundwater Protection Division's Source Number;**
- (b) the Source Protection Area, including any delineated zones;**
- (c) the lots and associated landowners, unless this information is included on a tax or orthophoto map showing the Source Protection Area; and**
- (d) the location of any potential and actual sources of contamination.**



# Maps

The landowner list needs to correlate with SPA map  
-Tax/Property Maps  
-Identifiers

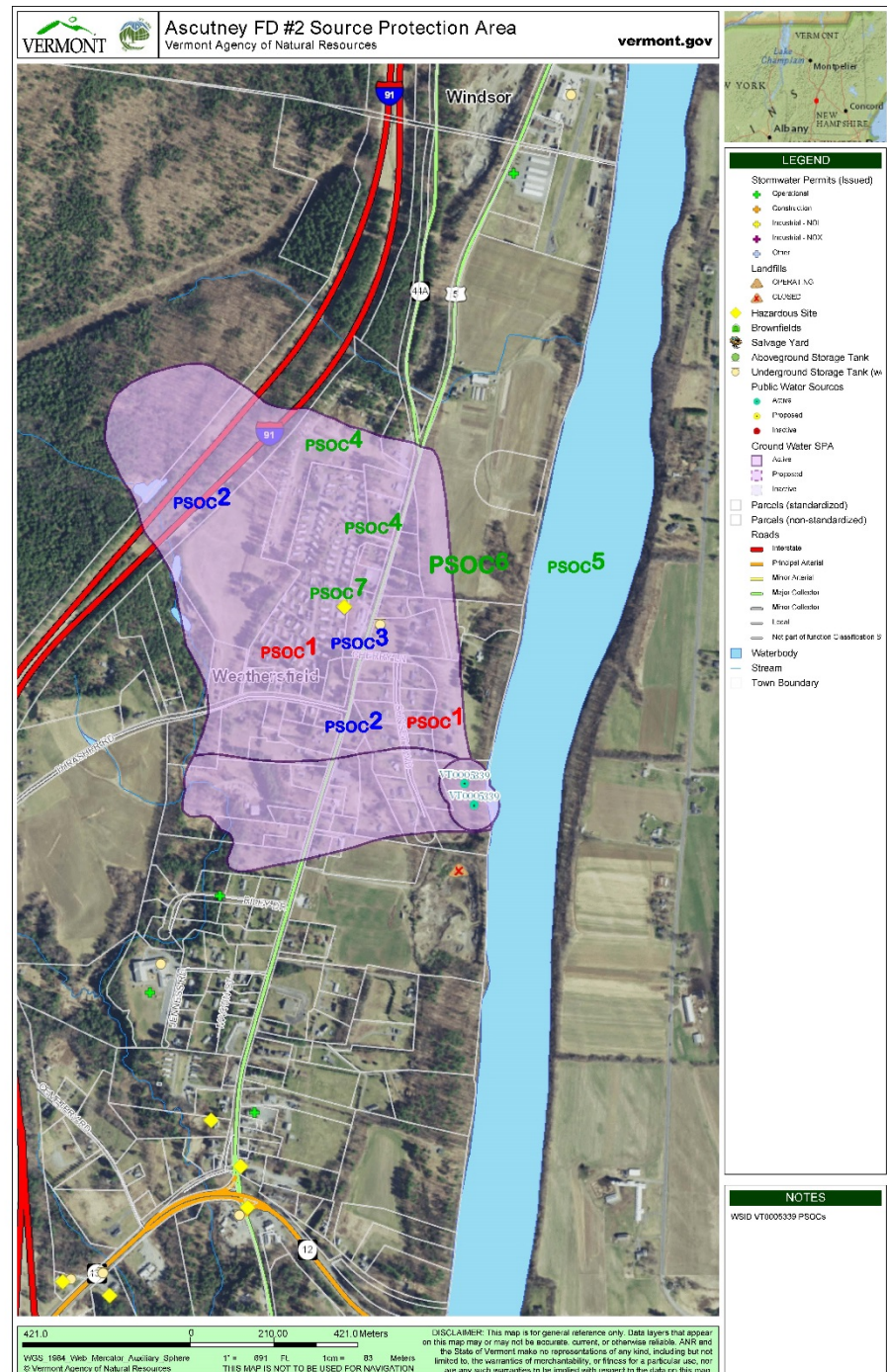
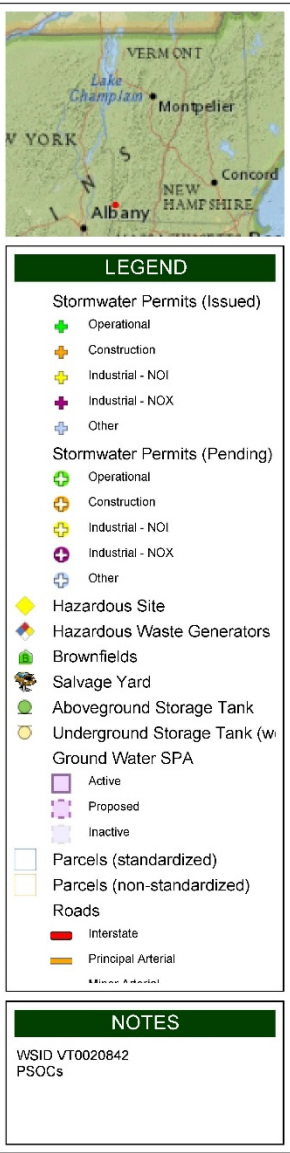
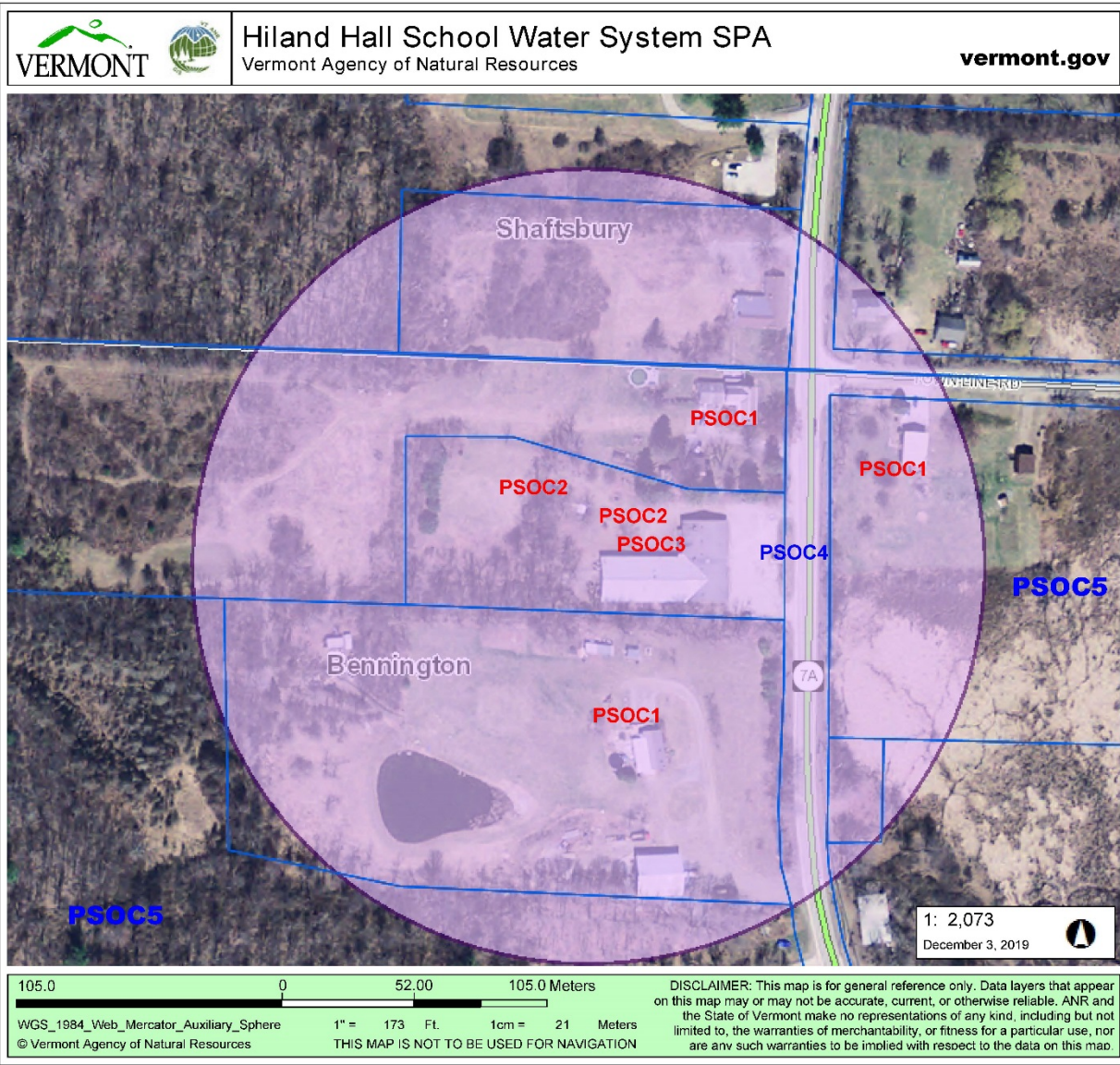


2020 Landowner's Source Protection Area WSID VT0005

Acres	Landowner	Property ID	
61	FLETCHER CATHERINE E	0360243	243 HEERMANVILLE I
1.5	HARKEY KEVIN,HARKEY SUSAN KELLEY	0360300	PO BOX 10 COVENTR
46.8	GUILLETTE GARY,GUILLETTE EVELYN	0070388	388 COVERED BRIDG
106	CUTTING ALLEN,CUTTING SANDRA	0360862	279 COVENTRY HEIG
94	KEMP JEFFREY,KEMP PHILOMENA	0360512	PO BOX 7 COVENTRY
2.31	COVENTRY FIRE DISTRICT	0360230	PO 90 BOX COVENTR
1.8	COVENTRY FIRE DISTRICT	0360145	PO 90 BOX COVENTR
0.1	COVENTRY FIRE DISTRICT	0360187	PO 90 BOX COVENTR

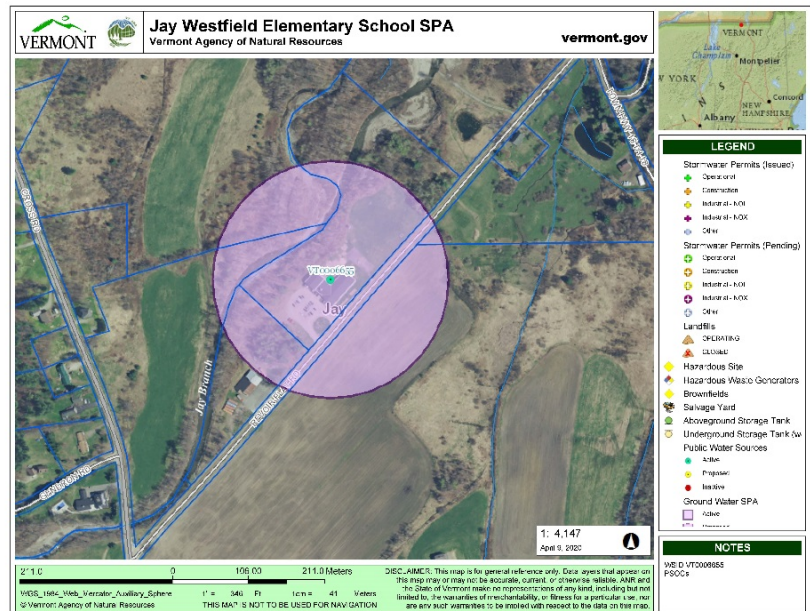
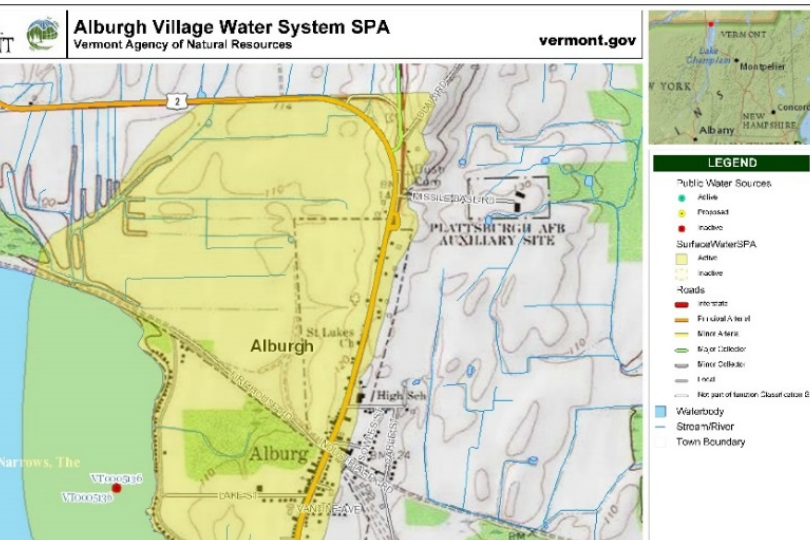
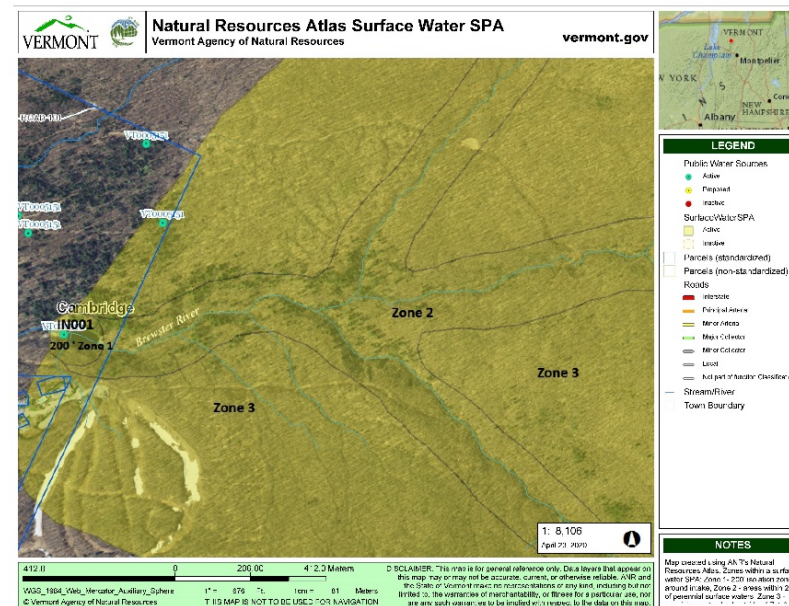
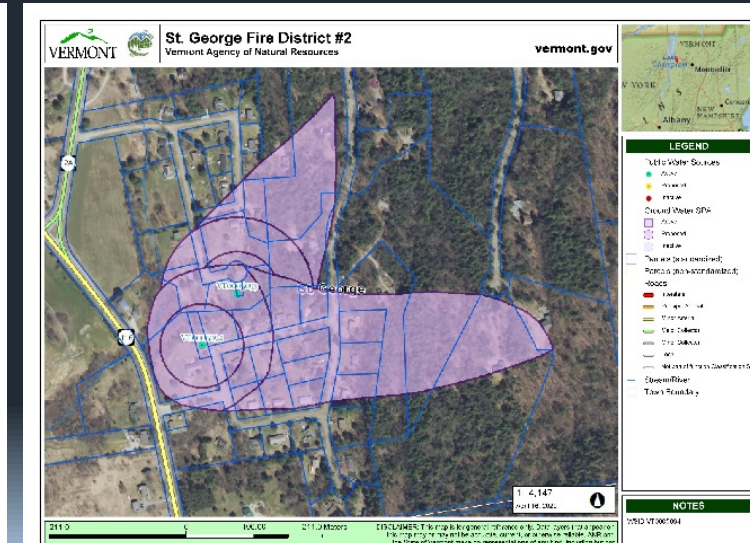
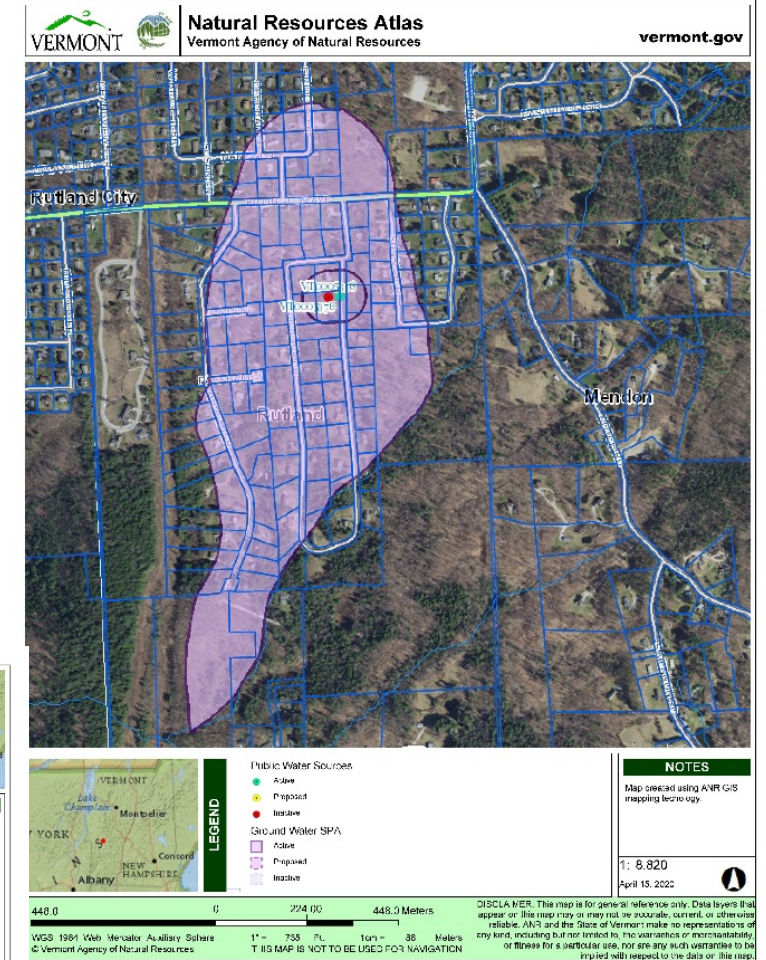


# PSOC MAP





# Source Protection Area Delineation





# Inventory of PSOC's

shall Include:

Type of Facility or business or land use

Contaminants associated with  
facility/business/land use

Contact Name and Address

PSOC Map showing the location of the potential  
sources of contamination in relation to the Source  
Protection Area and the sources.

With prior approval of the Secretary, certain potential sources of  
contamination may be grouped together instead of listed  
individually.

# INVENTORY OF PSOC's

## Residential Land Uses

- Septic systems
- UST/AST
- Driveways
- Swimming pools
- Lawn care Products
- Household  
Hazardous waste

## Utilities

- Herbicide spraying
- Transformers
- Salt Storage sheds

## Traffic Corridors & Parking Lots

- Road salt
- Storm water runoff
- Vehicular fluids/oils

## Commercial and Industrial Land Uses

- Gas stations
- Manufacturing plants
- Hazardous Facility (Tier II facility)

## Agriculture

- Animal waste
- Fertilizers, pesticides

### A Partial List of Potential Sources of Contamination in Vermont.

The following list is not inclusive, but is provided as a guide for Public Water Systems in developing Source Protection Plans. It is not intended to be adopted as a list of prohibitions in a wellhead protection area, but if a listed land use exists or is proposed in a PWS, the activity should be reviewed for any potential impact. By using best management practices and conservative design standards, the risk of contamination can be reduced. There is some overlap among the categories. Some activities are regulated by the State (Appendix C); others are not.

#### I. Commercial Activities

- 1) Laundromats
- 2) Drycleaners
- 3) Carpet and Upholstery Cleaners
- 4) Printing and Publishing
- 5) Photography and X-ray Labs
- 6) Furniture Stripping/Painting
- 7) Beauty Salons
- 8) Funeral Homes
- 9) Pest Control
- 10) Boat Building & Repairing
- 11) Automotive Service Industry
  - a) gasoline stations
  - b) car wash
  - c) service station
  - d) service (full repair)
  - e) service (minor repair)
  - f) body work
  - g) junk yards
  - h) auto/truck sales
- 12) Cemeteries
- 13) Taxidermists
- 14) Oil Distributors
- 15) Wood Preserving
- 16) Machine Shops/Metal Working

#### II. Manufacturing

- 1) Soft drink bottlers
- 2) Textiles (dyeing & finishing of fiber, yarn, or fabric)

# PSOCs

- 3) Paper and allied products
  - a) pulp mills
  - b) paper coating & glazing
- 4) Tanneries
- 5) Paving and Roofing (asphalt plants)
- 6) Rubber and Miscellaneous Plastic Products
- 7) Stone, Glass, Clay & Concrete Products
- 8) Canneries
- 9) Meat Packing, Rendering & Poultry Plants
- 10) Electrical Component Industry
- 11) Industrial Lagoon and Pits
- 12) Chemicals and Allied Products
  - a) fertilizers
  - b) pesticides and agricultural chemicals
  - c) industrial organic chemicals
  - d) synthetic organic fibers, except cellulosic
  - e) biological products
  - f) medicinal chemicals & botanical products
  - g) pharmaceutical preparations
  - h) soap and other detergents
  - i) specialty cleaning, polishing and sanitation preparations
  - j) perfumes, cosmetics, and other toilet preparations
  - k) paints, varnishes, lacquers, enamels and allied products
  - l) gum and wood chemicals
  - m) adhesives and sealants
  - n) warehouses retail/wholesale
- 13) Furniture Manufacturers

#### III. Agricultural

- 1) Animal Feedlots, Barns, Stables, and Kennels
- 2) Manure Pits
  - a) lined pits
  - b) unlined pits
- 3) Fertilizers and Pesticides (usage and storage)
- 4) Animal Burial
- 5) Dairy Waste
- 6) Poultry and Egg Processing
- 7) Creameries and Dairies



Inventory & Risk Assessment Table					
PSOC	Description	Property Type/Use	Zone	PSOCs	Risk
1	<u>Residential Properties:</u> Septic tanks/leach fields Parked/leaking Vehicles Fertilizers/Pesticides/Algaecide Household Hazardous Waste Heating Fuel Storage Tanks	Residential	1/2/3	VOC's SOC's Nitrates Bacteria	High
2	<u>I-91, Route 5, Roads/Streets</u>	Transportation	2/3	Bacteria Nitrates VOC's SOC's	Moderate
3	<u>Ascutney Market</u>	Business/Fuel	2/3	Bacteria Nitrates VOCs SOC's	Moderate
4	<u>Public/Private Wells</u>	Residence/Business	2/3	Bacteria Nitrates VOCs SOC's	Low
5	<u>Connecticut River</u>	Waterway	1	Bacteria Nitrates VOCs SOC's	Low
6	<u>Organic Agricultural Business</u>	Agricultural	2/3	Bacteria Nitrates VOCs SOC's	Low
7	<u>Hazardous Site</u>	Business	2/3	VOCs SOC's	Low





# Assessment of Potential Sources of Contamination

## WHAT IS THE LEVEL OF RISK?

**High**, **Medium**, **Low**

### FACTORS TO CONSIDER

- Distance
- Toxicity
- Elevation
- Level of control
- Volume of contaminant
- Prevalence of discharge
- Soil characteristics
- Aquifer characteristics
- Severity of illness or disease-causing capability
- Source construction integrity
- Known detection / actual PSOCs
- Other factors





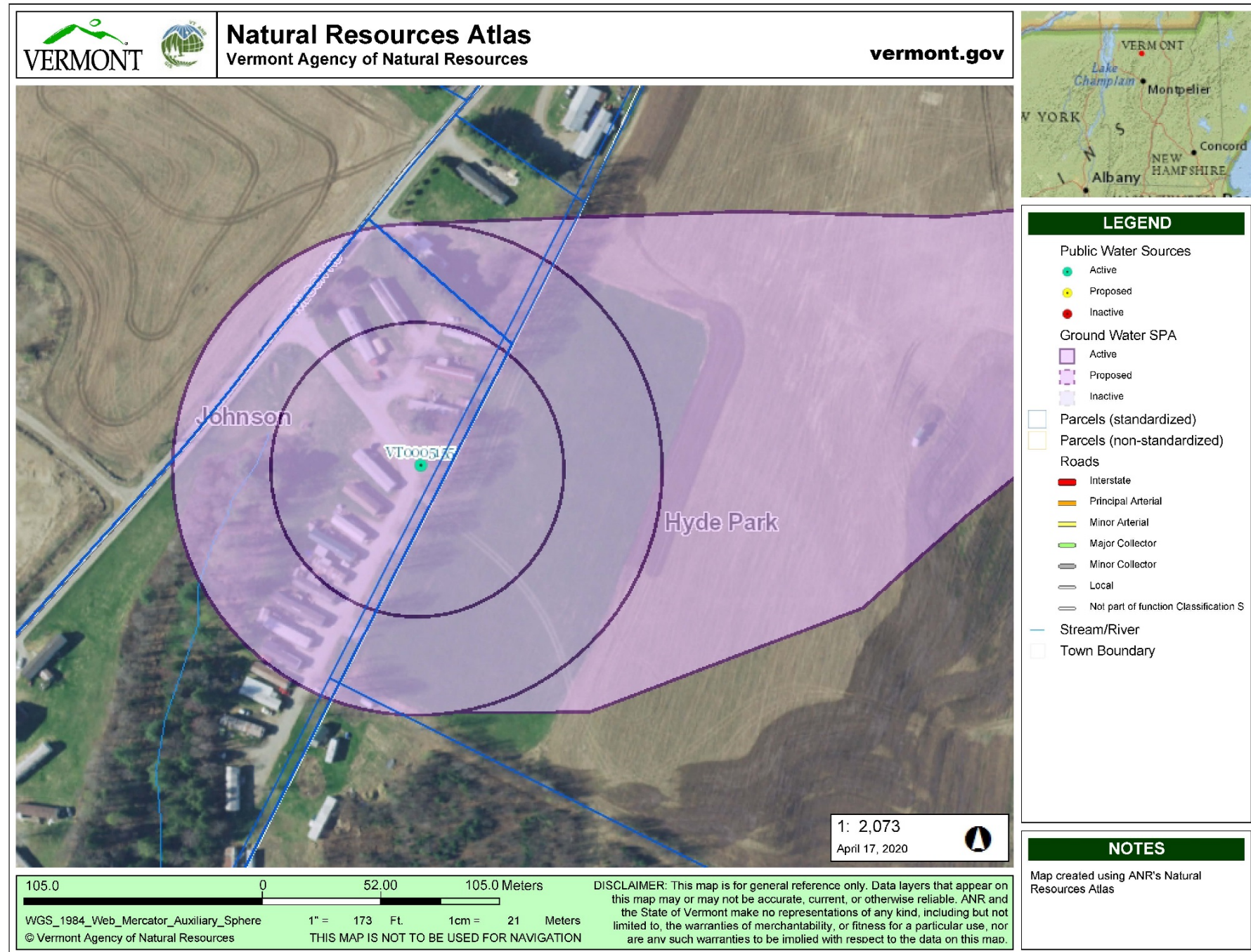
Identify the PSOCs in this picture. How would you rank them?

High

Medium

Low

- ✓ Prohibited Uses in the isolation zone or Zone 1 are High Risk.
- ✓ Actual sources of contamination in the isolation zone or Zone 1 are High Risk.



# Management Plan of Risk

The Source Protection Plan shall contain a plan for managing the potential and actual sources of contamination. This plan shall be directed towards controlling existing potential sources of contamination and, where possible, reducing risks of potential contamination.

**What Strategies and Actions will the Water System use?**

**Who will be responsible for implementation?**

**Is there an immediate need?**

**Short Term vs Long Term?**

- At a minimum, the Water System must notify all landowners within the Source Protection Area of the Source Protection Plan...

# MANAGEMENT TECHNIQUES



Acquisition/Control



Communication



Educational Opportunities



Land Use Regulations



Partnerships



Forestry



Agriculture



Infrastructure Improvements



# ACQUISITION/CONTROL

- Landownership -minimum 200 feet around water source(s)
- Own or acquire land in the SPA
- Easements
- Restrictive covenants
- Deed Restrictions
- Land Trusts
- Drinking Water State Revolving Fund



# Communication

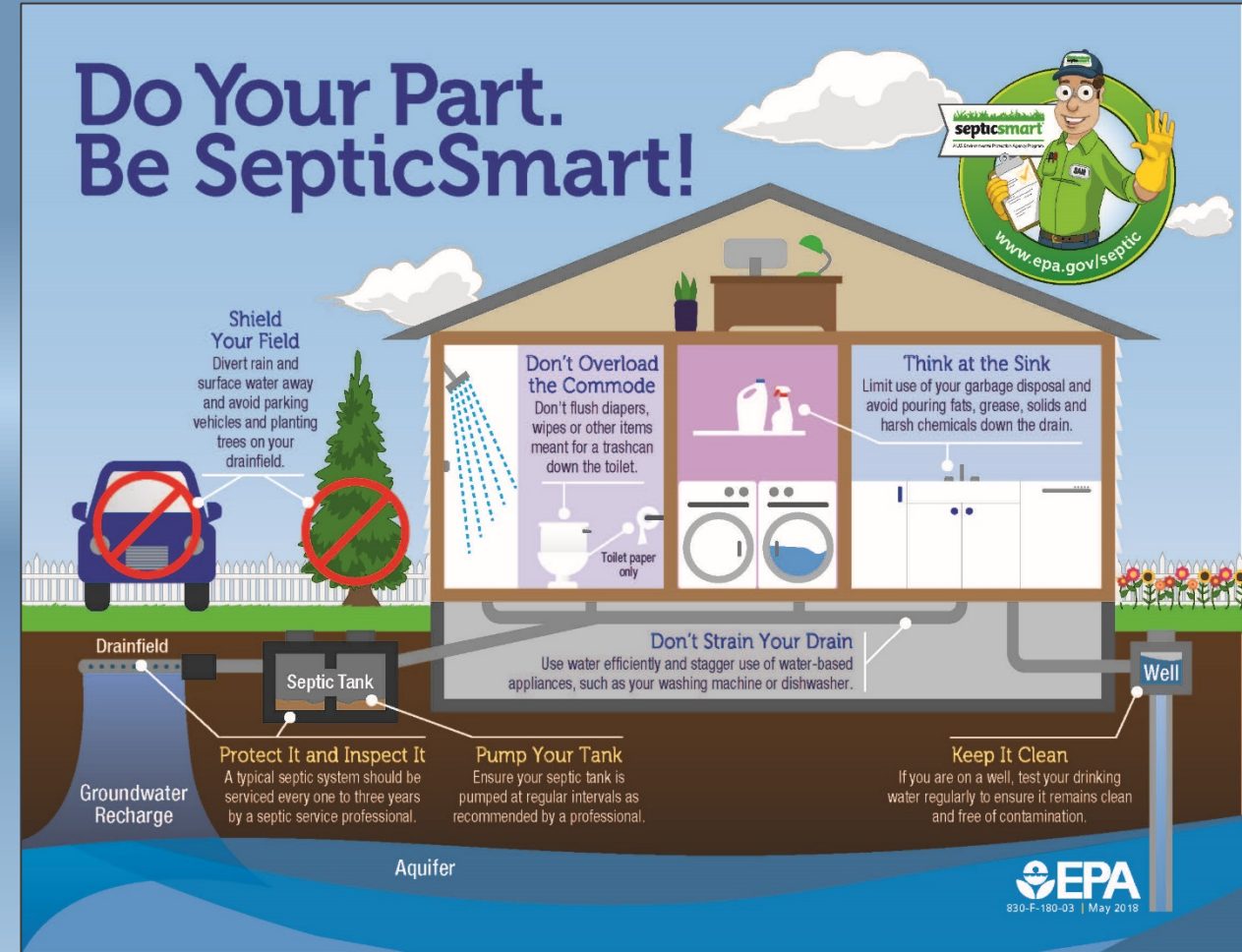
**The key tool for promoting protection**

- Talk with landowners
- Promote voluntary participation
- Perform field visits
- Attend town/board/zoning meetings
- Reach out to Emergency Contacts
- Hold Informational Gatherings
- Display at Town Meeting Day
- Annual letters



# EDUCATIONAL OPPORTUNITIES

- Be Septic Smart info graphic (EPA)
- VT DEPT. HEALTH
  - Testing Drinking Water from Your Private well
- Water Model demonstration
- Flyers in water bills
- Town Meeting Day Displays & Handouts
- School classroom demonstrations
- LEPCs (Local Emergency Planning Commissions)- Be a guest speaker
- Work w/ Local Conservation Commission, schools, & scouting organizations to Plant Vegetative Buffer Strips along waterways
- Operator Trainings



# LOCAL PLANNING



## LAND USE REGULATIONS & Policies

- Town Plan
- Zoning Ordinance
- Overlay District
- Groundwater Ordinance
- Groundwater Reclassification
- Hazard Mitigation Plan
- Emergency Management Plan
- Road Salt Reduction Policy
- Participate in Act 250 & Section 248 Permit applications
- Stormwater planning & MRGP
- Watershed Management Plan

# FORM STRONG PARTNERSHIPS

- Town Public Work Department
- State AOT
- Friends of the Winooski River; Friends of the Mad River etc.
- VT Natural Resource Conservation Districts (NRCS)
- Utilities - GMP, VELCO, WEC, Railroads, Solar entities
- Well Drillers Association
- Lake Shore Associations
- Municipal Officials

- Solid Waste Districts
- Rotary, Business Development organization
- Emergency Responders– Fire, Police, LEPC, EMD
- County Forester
- UVM Extension
- VT Rural Water Association
- Schools
- Agency of Natural Resources

# Forestry

## County Foresters



Addison County  
Chris Olson  
Bennington County  
Cory Creagan  
Caledonia/Essex County  
Matthew Langlais  
Chittenden County  
Ethan Tapper  
Franklin/Grand Isle County  
Nancy Patch

Lamoille County  
Rick Dyer  
Orleans County  
Jared Nunery  
Orange County  
Dave Paganelli  
Orange/Windsor County  
A.J. Follensbee

Rutland County  
Kyle Mason  
Southern Windsor County  
Hannah Dallas  
Washington County  
Dan Singleton  
Windham County  
Sam Schneski

- Current Use Program
  - Forest Stewardship
  - Forest Management Plan
  - Acceptable Management Practices
- for Maintaining Water Quality on  
Logging Jobs in VT, rev Aug. 2018



# Agriculture

## Vermont Required Agricultural Practices

## Conservation and Water Quality grant Programs

## Farm Bill 2018

VERMONT

REQUIRED AGRICULTURAL PRACTICES RULE

FOR

THE AGRICULTURAL NONPOINT SOURCE POLLUTION  
CONTROL PROGRAM

(Effective November 23, 2018)



116 STATE STREET  
MONTPELIER, VERMONT 05620-2901  
phone: (802) 828-2431; fax (802) 828-1410  
AGR.RAP@Vermont.gov



## Natural Resources Conservation Service

### **Farm Bill Priority Practices**

Groundwater Testing (code 355)

Well Decommissioning (code 351)

Integrated Pest Management (code 595)

Nutrient Management (code 590)

Filter Strips (code 393)

Riparian Forest Buffer (code 391)

Field Borders (code 386)

Cover Crops (code 340)

Heavy Use Area Protection (code 561)

Conservation Crop Rotation (code 328)

Agrichemical Handling Facility (code 309)



## RCPP

Regional Conservation  
Partnership Program



## EQIP

Environmental  
Quality Incentives  
Program

# Infrastructure Improvements



- Well camera investigation -detect cracks, leaks, well casing condition
- Install barriers such as fencing, bollards, or cement blocks
- Provide secondary containment for chemical and fuel/oil storage
- Maintain and inspect facility routinely & perform scheduled tasks
- Properly fitted well caps
- New treatment systems or sources
- Replace broken or leaky waterlines



# Contingency Plan

## WHAT HAPPENS IN AN EMERGENCY?

### HOW TO YOU ENSURE QUALITY AND QUANTITY OF DRINKING WATER TO YOUR CUSTOMERS?

The Contingency Plan shall include, but not be limited to:

- (a) Identification of alternative drinking water sources, both long and short term;
- (b) A list of key personnel to be notified in case of a water emergency; and
- (c) A shut-down/start-up procedure, if one is not already contained in an approved Operations & Maintenance (O&M) Manual.





# STATE AGENCY PHONE NUMBERS

## **VT Drinking Water and Groundwater Protection Division**

**Main Line: 802-828-1535**

**Jeff Girard *Compliance and Certification Manager*: 802-585-0314**

**David Love *Compliance Analyst*: 802-585-4902**

## **VT Department of Health**

**800-464-4343**

**802-863-7200**

## **VT Waste Management and Prevention Division**

**802-828-1138**

**24-HR HazMat Hotline**

**800-641-5005**

## **National Response Center**

**24-HR HazMat Hot line: 800-474-8802**

## **VT Department of Emergency Management**

**WATCHMAN: 800-347-0488**





# Water Suppliers



## Bottler Water Providers

<b>Misty Meadows</b>	Rutland, VT	802 775 1172
<b>Vermont Heritage</b>	Newport, VT	802 334 2528
<b>Crystal Rock</b>	Williston, VT	800-201-6281
<b>JMJ Beverages/Vermont Pure</b>	Sandwich, MA	508-833-7873
<b>Monadnock Mountain Spring Water</b>	Wilton, NH	603-654-2728
<b>Reinhart Foods</b>	Essex, VT	800-272-5302 802 288 5000
<b>Vermont Natural Water (PEPSI)</b>	Brattleboro, VT	802-254-6093

## Bulk Water Haulers

Name	Phone #	Alternate	Website	Capacity	Water Source
Fresh Water Hauler (Underhill)	802-658-2223	802 355 4321	<a href="http://www.freshwaterhaulers.com">www.freshwaterhaulers.com</a>	4600 gallon	Stowe Water District
Pristine Mountain Springs (Stockbridge)	802-746-8186	802-236-3989 cell	<a href="https://pristine-mountain-springs.business.site/">https://pristine-mountain-springs.business.site/</a>	8000 gallon (4)	Colton Springs Water Supply
A-1 Water Delivery (St Albans)	802-355-4892	gwright@surfglobal.net	<a href="http://a1waterdeliveryvt.com/">http://a1waterdeliveryvt.com/</a>	4250 gallon	Purchase from Municipality
H2O Express Transport, LLC (Schuylerville, NY)	518-791-2484		<a href="http://www.h2oexpress.com">www.h2oexpress.com</a>	6200 gallon	City of Troy

# Updating Your Source Protection Plan

- Every Three (3) YEARS
- Due Date based on approval date of original SPP
- Late plan or early plan submittal will not change the basis for the plan due date

## Options:

- Complete Rewrite
- Detailed Update addressing ALL update components
  - Front cover tracking chart can be used to outline and summarize the changes
- Detailed Administrative Letter addressing ALL update components

## Send Updates to:

- Laura Ranker, SWP Specialist, VT DWGPD, One National Life Drive, Davis Building, 4<sup>th</sup> floor, Montpelier, VT 05620-3521 or [laura.ranker@Vermont.gov](mailto:laura.ranker@Vermont.gov) or use the FTP Form



# Updating Your Source Protection Plan

## COMPONENTS OF A SPP UPDATE:

- (a) Inspection reports of potential sources of contamination;**
- (b) Inventory and assessment of new potential and actual sources of contamination in source protection area;**
- (c) Map location of new potential and actual sources of contamination;**
- (d) Management plans for new potential sources of contamination;**
- (e) A summary of any remedial or corrective actions taken on potential sources of contamination; and**
- (f) Changes in landowners; key town, county, or state officials; management techniques; source protection area; or other pertinent information.**
- (g) Pertinent new requirements of state and federal rules which may have been adopted since the last update.**



# Who is the best person(s) to update your plan?

## Considerations

- Time
- Access to information
- Knowledge





# Updating Your Source Protection Plan

**Every update look for changes:**

SPA Boundaries

Water System Details

Personnel

Landowners

Contingency Plan Contacts

Shut Down/Start Up Procedures

Implementation Actions Taken





Environmental Topics

Laws & Regulations

About EPA

Search EPA.gov



# Source Water Protection

CONTACT US

SHARE



## Protect Source Water with the Drinking Water State Revolving Fund

America's Water Infrastructure Act of 2018 expanded source water protection-related eligibilities under the Local Assistance Program set-aside.

- [View the webinar and slides.](#)
- [Read the fact sheet and case studies.](#)
- [Read the memo on expanded eligibilities.](#)



Drinking water comes from ground water (aquifers), streams, rivers, and lakes. Protecting these drinking water sources is key to sustaining safe drinking water supplies. Explore this site to learn the basics of source water protection, including assessment and implementation, and how you can help protect the source of your drinking water.



# Natural Resources Conservation Service

United States Department of Agriculture

[About NRCS](#) | [Careers](#) | [National Centers](#) | [State Websites](#)

[Topics](#)

[Programs](#)

[Newsroom](#)

[Blog](#)

[Contact Us](#)



[Browse By Audience](#) | [A-Z Index](#) | [Help](#)

You are Here: [Home](#) / [About NRCS](#)

*Stay Connected*



## About NRCS

### ⊕ NRCS Leadership

[History of NRCS](#)

[Organization](#)

### ⊕ Accountability

[Environmental Justice](#)

[Legislative Affairs](#)

[Public Affairs](#)

## Related Topics

- [Outreach & Advocacy](#)
- [Careers](#)

## About NRCS



# SUMMARY OF DEC GRANT AND LOAN PROGRAMS

GRANT/LOAN NAME	DESCRIPTION	WHO IS ELIGIBLE	FUND SOURCE & MAX AMOUNT	CONTACT
<b>DRINKING WATER GRANTS AND LOANS</b>				
Drinking Water State Revolving Fund (DWSRF) Loan Programs	Planning, design and construction of public water system improvements to comply with drinking water standards and protect public health	Municipalities and certain privately-owned public water systems	EPA's Drinking Water State Revolving Fund Max. Planning Loan Amt: \$150,000 annually Max. Construction Loan Amt: \$2,500,000 annually	Celia Riechel <a href="mailto:Celia.Riechel@Vermont.gov">Celia.Riechel@Vermont.gov</a> 802-585-4904
Water Planning Loan Program	Feasibility studies, preliminary engineering and final design services related to drinking water systems	Municipalities	EPA's Drinking Water State Revolving Fund	Celia Riechel  <a href="mailto:Celia.Riechel@Vermont.gov">Celia.Riechel@Vermont.gov</a>  802-585-4904
Water Source Protection Loan Program	Purchase of land or conservation easements to protect public water sources	Municipalities	EPA's Drinking Water State Revolving Fund	Celia Riechel  <a href="mailto:Celia.Riechel@Vermont.gov">Celia.Riechel@Vermont.gov</a>  802-585-4904
Vermont Only Drinking Water Loan	Design, land acquisition, construction of water supply when disconnected involuntarily from public water supply	Municipalities or municipally sponsored privately-owned systems, designated for projects not eligible under the CWSRG Program	State Funds	Celia Riechel  <a href="mailto:Celia.Riechel@Vermont.gov">Celia.Riechel@Vermont.gov</a>  802-585-4904
Engineering Planning Advances	Development of engineering feasibility studies for drinking water systems or wastewater solutions.	Municipalities without municipally owned community drinking water or sewer systems.	State Funds	Lynnette Claudon <a href="mailto:Lynnette.Claudon@Vermont.gov">Lynnette.Claudon@Vermont.gov</a> 802-490-6226



**Source Protection Loan Program**

**Eligible organizations:** Municipal Water Systems

**Eligible Projects:**

- For purchasing land or conservation easements to protect public water sources and ensure compliance with state and federal drinking water standards.
- Source must have hydrogeologically-delineated source protection area (no 3000' radius source protection areas) and an approved Source Protection Plan prior to loan award.
- Water system must demonstrate how the project will directly promote public health protection or compliance with national drinking water regulations.

**Loan Terms and Rates:** 3% interest, 20 year term

**Loan Amounts:** Maximum loan amount is \$200,000. There is no minimum loan amount.

**Project Ranking:**

A project priority list is maintained by the Drinking Water and Groundwater Protection Division. A priority score is established for each eligible project by assigning points based on established criteria. The criteria, most of which are the same as for construction projects, include the following general categories: (1) Population; (2) Financial need/affordability; (3) Downtown area preference; and (4) Source protection.

**Priority List Applications:** Applications accepted on a continuing basis.

**Loan Recipients:** The highest priority projects on the priority list are funded as funds become available. **Loan Applications:** Water systems are required to submit a project schedule for approval by the Drinking Water and Groundwater Protection Division within 30 days of notification of available funding.

**Loan Conditions:**

- Management in accordance with Source Protection Plan;
- Prohibition of sale as long as source remains a state-permitted public water source;
- Requirement for an annual inspection and report.

**Procurement Requirements:**

- A minimum of two appraisals required for evaluation purposes;
- Proposed easements and purchase agreements require review and approval by DWGWPD;
- Normal closing requirements, such as title search, apply;
- Purchase must be from a willing seller.

**Repayment:** Payments begin one year after last loan disbursement.

**More Information:**

Rodney Pingree, Water Resources Section Chief  
802-585-4912  
rodney.pingree@vermont.gov

This fact sheet and related environmental information are available electronically at:  
[www.dec.vermont.gov/water](http://www.dec.vermont.gov/water)

Drinking Water and Groundwater Protection Division  
1 National Life Drive, Davis 4  
Montpelier, VT 05620-3521  
Phone: 802-828-1535  
Fax: 802-828-1541

## Eligible organizations: Municipal Water Systems

### Eligible Projects:

- For purchasing land or conservation easements to protect public water sources and ensure compliance with state and federal drinking water standards.
- Source must have hydrogeologically-delineated source protection area (no 3000' radius source protection areas) and an approved Source Protection Plan prior to loan award.
- Water system must demonstrate how the project will directly promote public health protection or compliance with national drinking water regulations.

**Loan Terms and Rates:** 3% interest, 20 year term **Loan Amounts:** Maximum loan amount is \$200,000. There is no minimum loan amount.

### Loan Conditions:

- Management in accordance with Source Protection Plan;
- Prohibition of sale as long as source remains a state-permitted public water source;
- Requirement for an annual inspection and report.

### Procurement Requirements:

- A minimum of two appraisals required for evaluation purposes;
- Proposed easements and purchase agreements require review and approval by DWGWPD;
- Normal closing requirements, such as title search, apply;
- Purchase must be from a willing seller.

**More Information:** Rodney Pingree, Water Resources Section Chief 802-585-4912 [rodney.pingree@vermont.gov](mailto:rodney.pingree@vermont.gov)

# 15 Minute Break

When you return please use the Chat Box to:

- ✓ Sign in by typing your name
- ✓ Questions ?

# Overview

## Tools

### ANR Atlas

GW/SW SPAs

Hazardous Sites

Stormwater Permits

Sewer Service Area

Measuring & Labeling

Contours and Land Features

Create a Map - Printing/Save



### Parcel Viewer

Well Completion Reports

UST & Hazardous Sites databases

Septic Tank Search & DEC Permit database